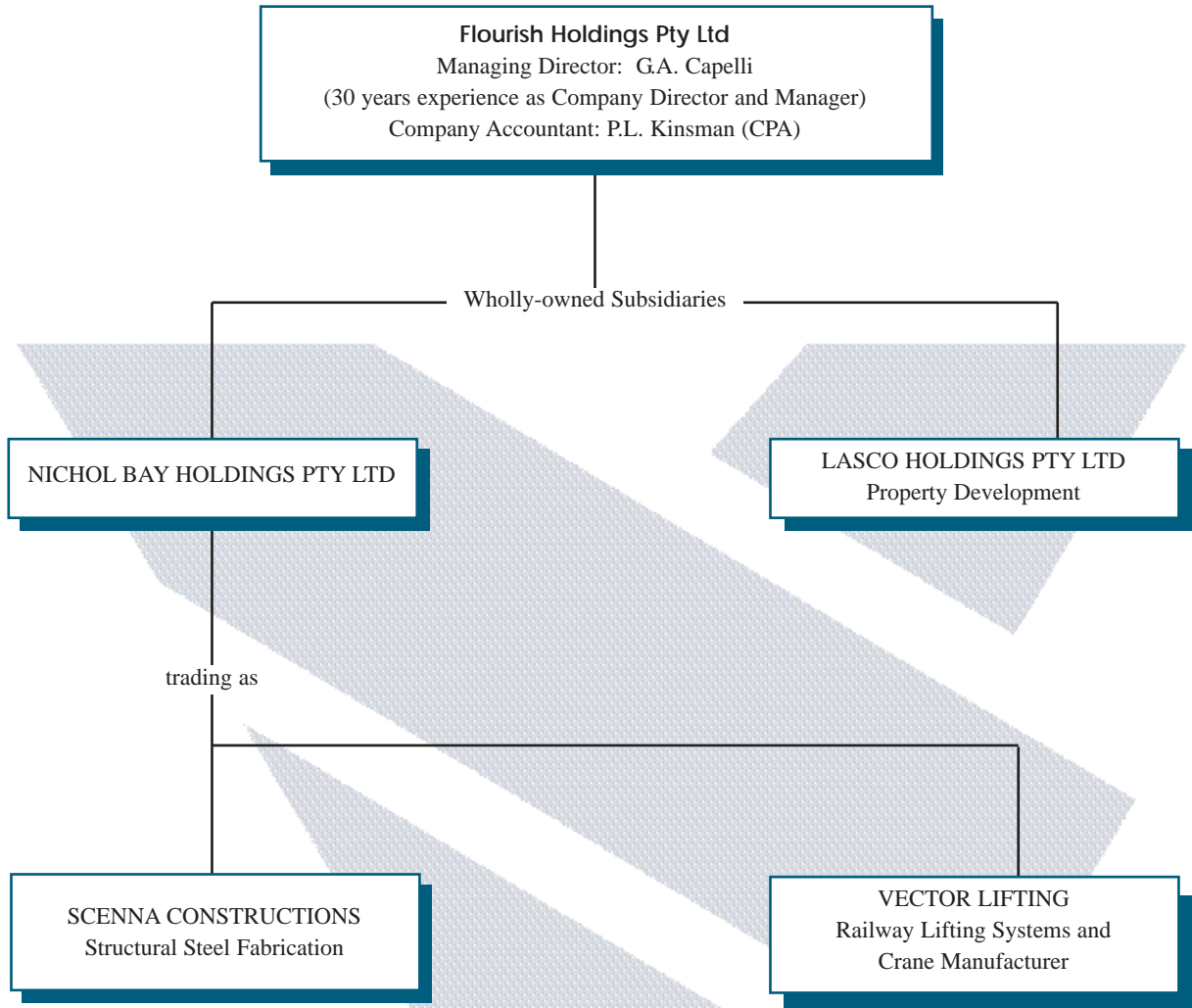


CORPORATE INFORMATION



Company Structure



| | |
|----------------------------|--|
| Company | Nichol Bay Holdings Pty Ltd ACN: 009 381 140 |
| Trading Names | Scenna Constructions & Vector Lifting |
| Number of Employees | 35 |
| Head Office | 43 Spencer Street, Jandakot Western Australia 6154 Phone:(08) 9417 9128, (08) 9417 4447 Fax: (08) 9417 4105 E-mail: info@vectorlifting.com.au Website: www.vectorlifting.com.au |

Company Details

Plant and Equipment

| | | | |
|----------------------------------|--|---------------------|--|
| LAND AREA | 8050 m2 | SITE WORK EQUIPMENT | 1 x 55 Tonne P & H Hydraulic 1 x 31 Tonne P & H Pin Jib 2 x 22 Tonne Grove Rough 1 x 18t Austin Western Rough 2 x 15 Tonne Rangers All |
| WORKSHOP Terrain | 3000 m2 Three bays, 1 @ 67 m x 19 m, 1 @ 60 m x 19 m, 1 @ 67m x 9m | | |
| Terrain | | | |
| OFFICE | 250 m2 | | |
| MACHINE SHOP EQUIPMENT | 1 x 2 Tonne Overhead Crane 1 x Lathe 3000 mm between centre 1 x Lathe 2000 mm between centre 1 x Lathe 1500 mm between centre 1 x Milling Machine 1 x Horizontal Borer 1x Machining Centre 1 x Thread Cutting Machine | | |
| FABRICATION SHOP EQUIPMENT | 2 x 10 Tonne Overhead Crane 2 x 5 Tonne Overhead Crane 1 x 3 Tonne Wall Travelling Crane 1 x 6 Tonne Mobile Crane 1 x metal worker 100 tonne 1 x metal worker 50 tonne 1 x 3 head oxy/act profile cutter 1 x 150 tonne press 1 x 50 tonne pipe rotator 2 x band saws 500 mm cut 6 x CIG 350 MIG welders 2 x Lincoln 600 MIG welders 1 x Hobart 600 MIG welder 3 x WIA 300 MIG welders 10 x general stick welders 5 sets oxy/act cutting plant | | |

Lines of Business

Material Handling

- jib cranes
- overhead travelling cranes
- semi portal cranes
- explosion proof cranes
- portal cranes
- vehicle jacks
- railway jacks
- underfloor lifting
- rotators & positioners
- pallet assembly tables

Steel Fabrication

- mining structural
- semi mechanical
- hoppers, chutes
- conveyors
- bisalloy wear plates
- general fabrication
- motor bases
- take-up towers

MAJOR JIB CRANE PROJECTS

| | |
|-------------------|--|
| Woodside | Burrup LNG Project. 8 off 5000 kg x 14000mm Span Explosion Proof Jib Crane |
| Toyo Kanetsu K.K. | Brunei LNG Project. 4 off 4500 kg x 11000mm Span Explosion Proof Jib Crane |
| Toyo Kanetsu K.K. | Sarawak Malaysia LNG Project. 2 off 4500 kg x 12000mm Span Explosion Proof Jib Crane |
| Toyo Kanetsu K.K. | Bintula Malaysia. 4 off 4500 kg x 11000mm Span Explosion Proof Jib Crane |
| Alcoa Australia | Pumping Station Jib Crane. 4000 kg x 10000mm Articulated Boom Jib Crane |
| Alcoa Australia | Wagerup Heater Exchange. 3 off 7500 kg x 21000mm Span Semi Portal Crane |
| New Zealand Steel | Steel Mill. 7000kg x 7000mm Span Jib crane |
| Moora Concrete | Yard Crane. 4 off 2000 kg x 16000mm Span Jib Crane |
| HMAS Stirling | 6 Special Davit Cranes for re- fuelling submarines |

In addition to the above mentioned cranes Vector Lifting have designed and manufactured over 5000 jib cranes of various capacities and spans, ranging from 150 kg to 20000 kg and 2 m up to 20m.

Finally...
 a word about quality,
 and the importance it holds for us



Vector Lifting and Scenna Constructions provide quality service and products throughout the fabrication and materials handling industry. Product and service quality are paramount to the commercial success of each project undertaken. To ensure reliability and longevity of the products, We are in the process of developing a fully documented and implemented quality assurance system which satisfies the requirements of AS/NZ ISO 9001 and ISO 9001. The quality system is concerned with achieving and maintaining the required quality during tender/contract review, engineering, manufacturing and despatch for each specific contract. Both companies have a philosophy which maintains a goal of continuous quality improvement involving all employees.