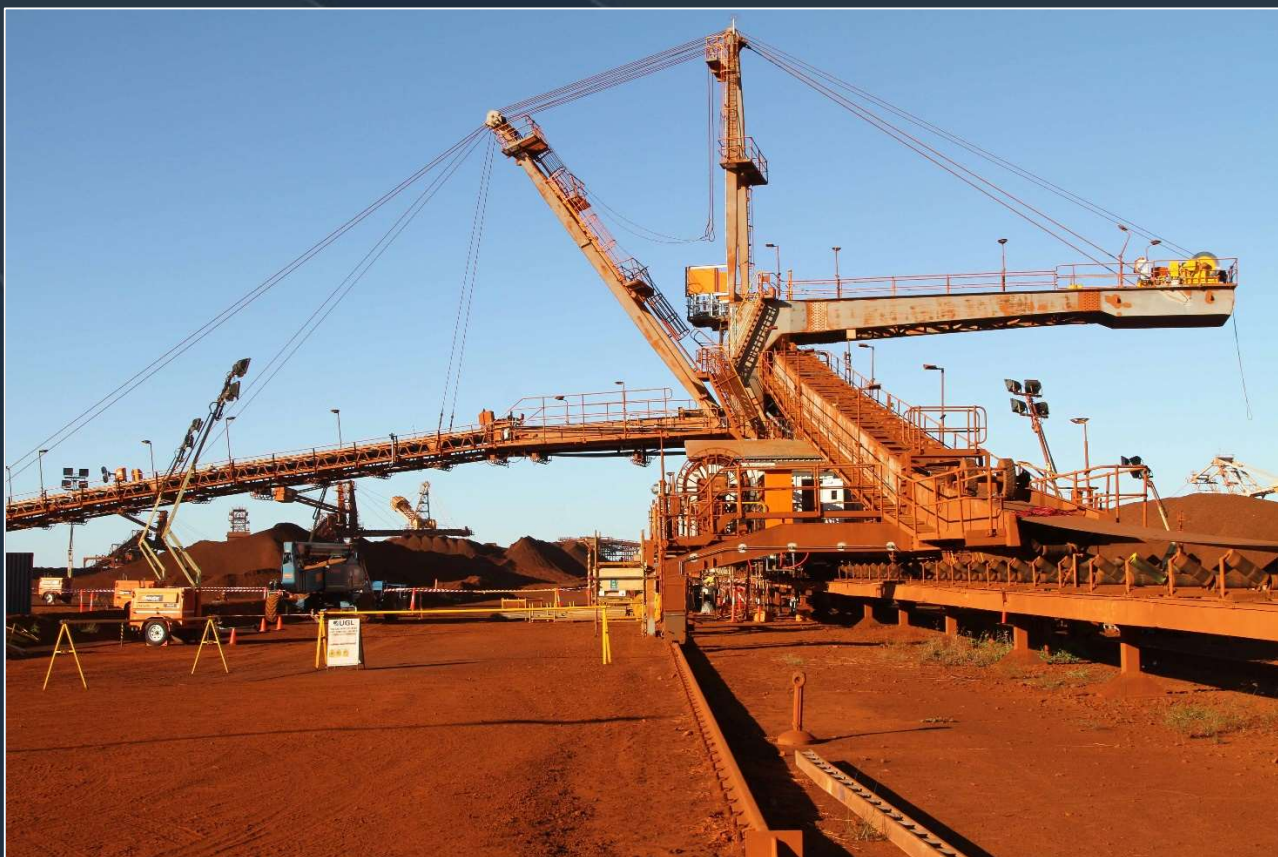


WINCHES



Winch Features

- Certified Lifting Eyes
- Transport Frames Provided
- Single Piece Winch Chassis
- Lockable Ratchet & Pawl on Drum with Shear Pin
- Guarding For Personnel Protection
- Guarding For Winch Protection from Debris/Falling Objects/Weather
- Pendant/Wireless Remote or Fully Remote Operation
- Onboard Storage for Pendant/Wireless Remote
- Choice of Rope Specifications Available
- Choice of Rope End Terminations Available
- Surface Treatment To Any Specification
- Fully Assembled & Tested Prior to Dispatch

Electrical/Control System Features

- All functions are interlocked to prevent incorrect operation
- Hold To Run Controls
- Phase Rotation Indication
- Phase Failure Relays
- E-stops
- Stainless Steel Electrical Enclosures
- Limits Fitted:
 - Rope Overlay Limit – To Prevent “Bird Caging”
 - Final Up Limit – Per AS 1418
 - Cam Limit Switch – For Setting Up & Down Limits
 - Engaged/Disengaged Limit on Pawl
- Can Be Supplied as A Standalone Installation or Integrated Into An Existing Electrical Installation
- Build Specifications to Client Requirements



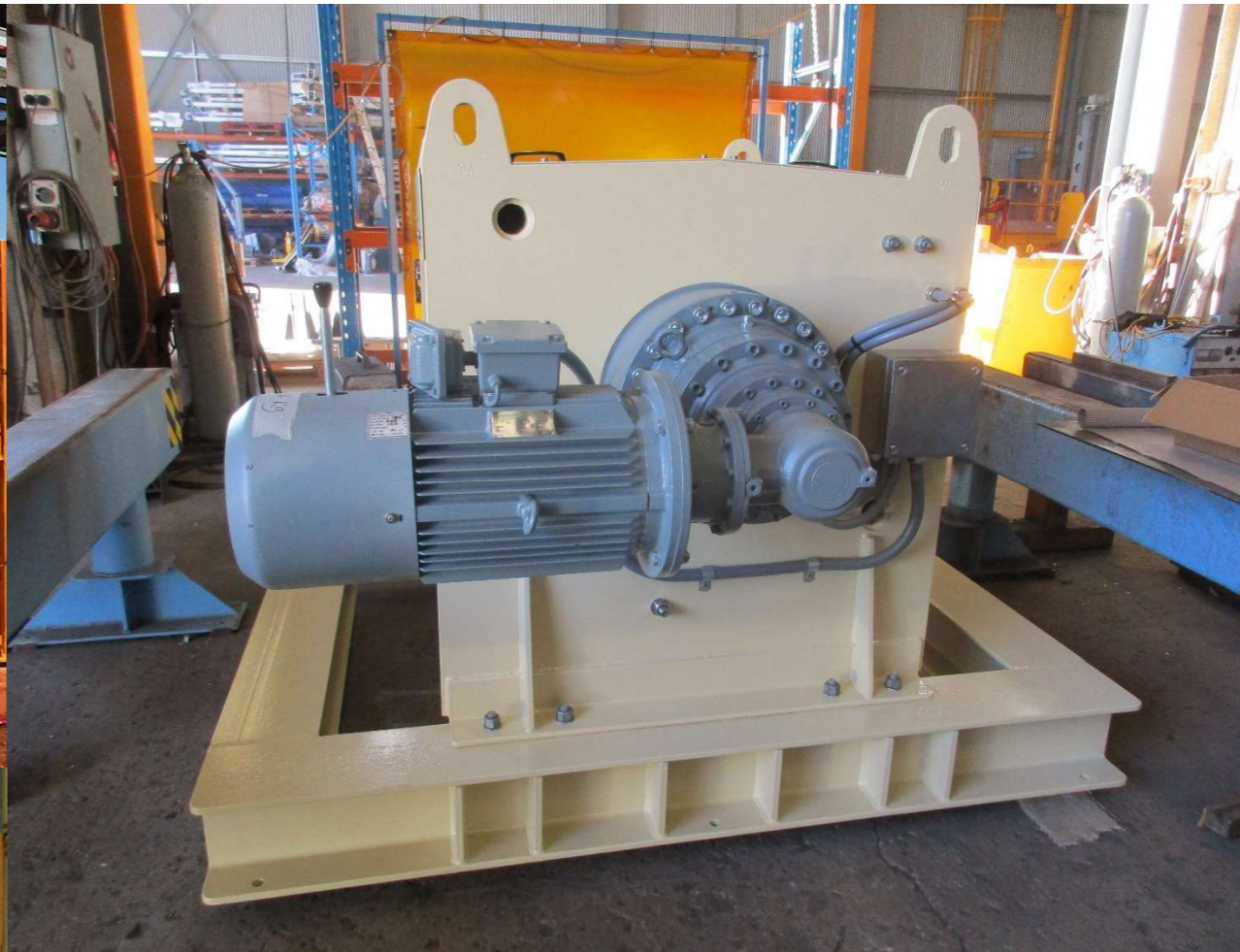
Winch Design Features

- 100% Australian designed and manufactured in our Perth facility in Compliance With
 - AS/NZS 9001
 - AS 1418
 - AS 1554
 - AS 1710
 - AS 3000
 - AS 3008
 - AS 3569
 - AS 4024

Fully customisable

To Meet Client & Site Requirements. Units Can Be Fitted With:

- Load Cells to Prevent Overloading
- Warbler & Beacon
- LED Work Lights
- 10A/15A GPOs
- Materials of Construction – Fully Stainless
- Fail-Safe Hydraulic Brakes



www.vectorlifting.com.au



 43 Spencer St, Cockburn Central, WA 6164

 +61 8 9417 9128

 +61 8 9417 4105

 info@vectorlifting.com.au

